

LOT NO. 2

PROPERTY OF
**GEORGE H. HAUGHN &
GLORIA K. HAUGHN**

DEED REFERENCE : BOOK 741, PAGE 473

LOT 2
AREA = 2.430 ACRES

T NO. 3
PROPERTY OF
**McKENZIE &
R. E. MCKENZIE**
DEED REFERENCE : BOOK 256, PAGE 833

LC
AREA = 1.6

NOTE :
EASEMENT WIDTH NOT DETERMINED

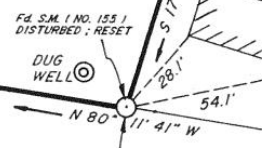
OF
McNICKLE
BOOK 560,

RADIUS = 450' (INTL.)
ARC = 109.41'

RADIUS = 276.39'
ARC = 94.80'

RADIUS = 276.39'
ARC = 16.00'

**PUBLIC HIGHWAY
(THE POINT ROAD)**



2.1' CLEARANCE FROM GARAGE TO I.B.
1' OF PUBLIC HIGHWAY (HURST ROAD)

EDGE OF SANDSEAL SURFACE (13' ± WIDE)

DRIVEWAY

SHED

DWELL

DWELL

DWELLING CIVIC NO. 163

DUG WELL

Fd. S.M. (NO. 155) DISTURBED; RESET

Fd. S.M. DISTA

26.8'

36.5'

116.00'

S 17° 01' 15" W

54.1'

33'

N 80° 11' 41" W

101.80'

SET S.M. (B.C.)

SET S.M.

S 81° 50' 52" E

16.00' (TIE)

SET S.M. (B.C.)

SET S.M.

N 14° 38' 01" E

34.03'

SET S.M.

N 07° 29' 55" E

75.87'

SET S.M.

N 27° 14' 13" E

111.02'

SET S.M.

N 32° 37' 54" E

64.68'

SET S.M.

N 18° 06' 39" E

80.33'

SET S.M.

N 32° 47' 44" E

32.79'

SET S.M.

S 88°

381.78'

SET S.M.

TOP OF ROCK

268.78'

S 72° 25' 02" E

N 1/4

126.98'

Fd. I.B.

Fd. I.B.

N 74° 11' 13" W

205.25'

Fd. I.B.

16° E

205.70'

N 15° 57' 39" E

131.86'

N 73° 57' 49" W

S.M. (NO. 409) BY I.B.

REMAINS OF OLD FENCE

243.67'

REMANENCE

OVERHEAD UTILITY LINES

16' WIDE RIGHT-OF-WAY TO LOT 3

111.02'

SET S.M.

SET S.M.

SET S.M.

SET S.M.

SET S.M.

SET S.M.

SET S.M.

SET S.M.

SET S.M.

SET S.M.

SET S.M.

SET S.M.

SET S.M.

SET S.M.

SET S.M.

SET S.M.

SET S.M.

SET S.M.

SET S.M.

SET S.M.

SET S.M.

SET S.M.

SET S.M.

SET S.M.

SET S.M.

SET S.M.

SET S.M.

SET S.M.

SET S.M.

SET S.M.

SET S.M.

SET S.M.

SET S.M.

SET S.M.

SET S.M.

SET S.M.

SET S.M.

SET S.M.

SET S.M.

SET S.M.

SET S.M.

SET S.M.

SET S.M.

SET S.M.

SET S.M.

SET S.M.

SET S.M.

SET S.M.

SET S.M.

SET S.M.

SET S.M.

SET S.M.

SET S.M.

SET S.M.

SET S.M.

SET S.M.

SET S.M.

SET S.M.

SET S.M.

SET S.M.

SET S.M.