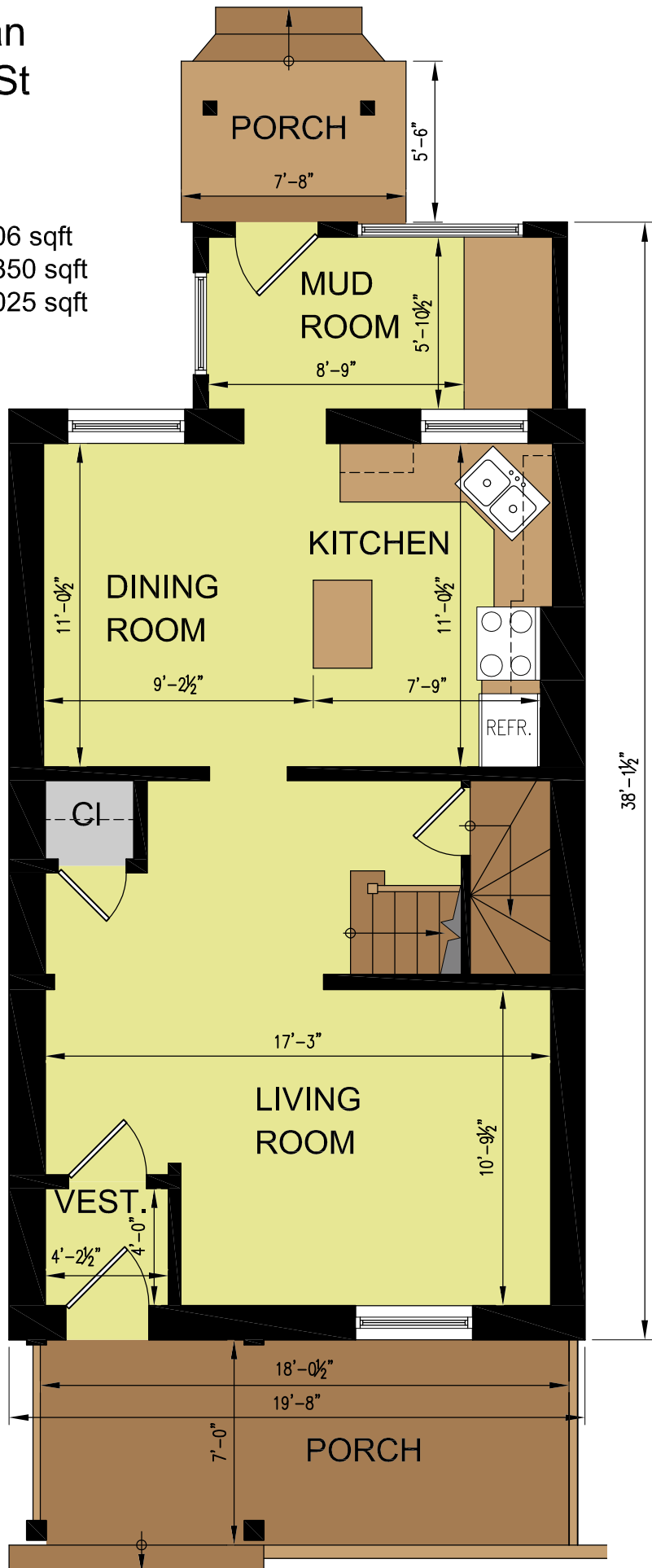




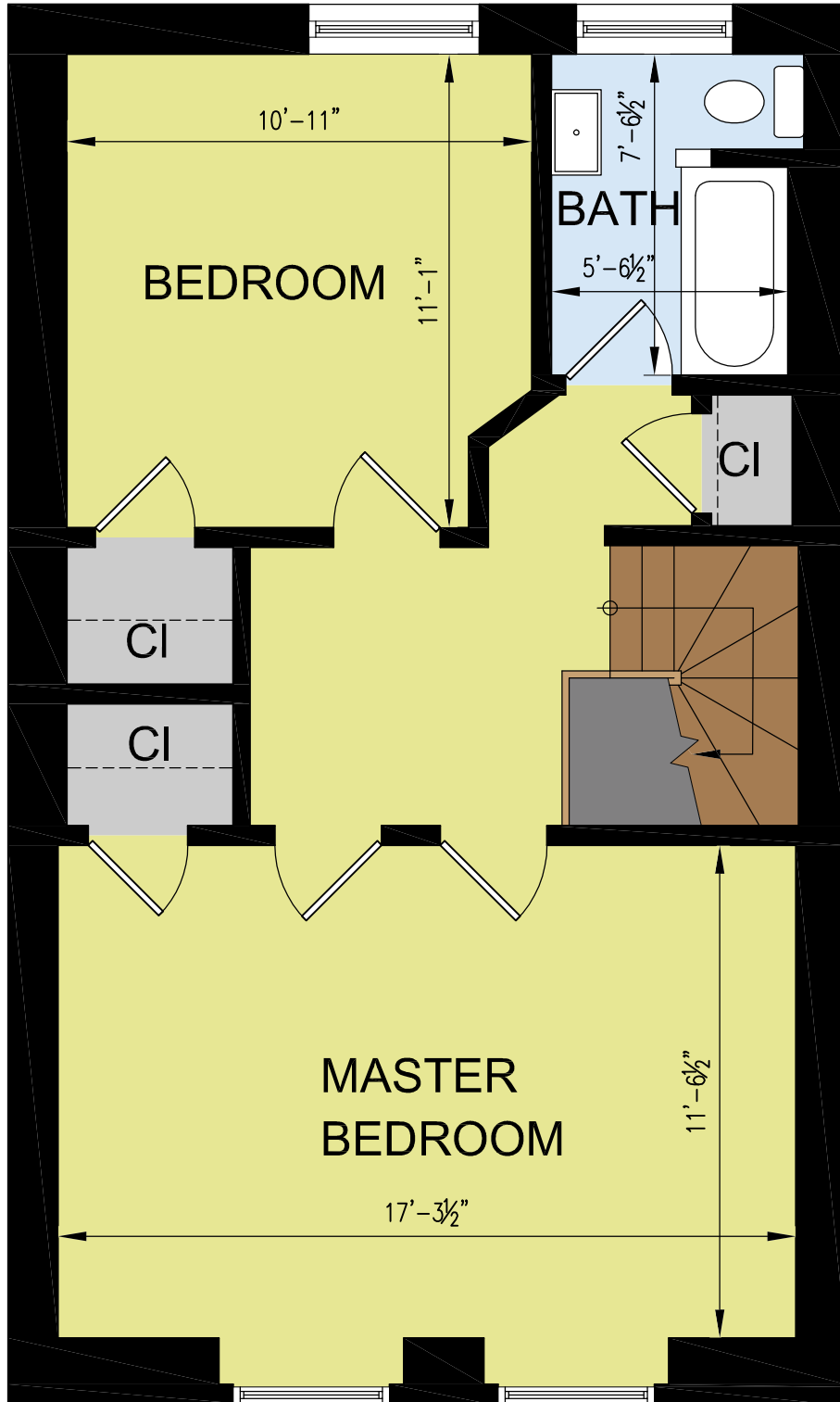
Main Floor Plan 5534 Stanley St Halifax, NS

MAIN FLOOR AREA - 706 sqft
MAIN LIVING AREA (MLA) - 1350 sqft
TOTAL LIVING AREA (TLA) - 2025 sqft



THIS DRAWING IS FOR REFERENCE ONLY, NOT FOR CONSTRUCTION. DIMENSIONS NOT WARRANTED. THIS DRAWING TO REMAIN PROPERTY OF JULES CHAMBERLAIN

THIS DRAWING IS FOR REFERENCE ONLY, NOT FOR
CONSTRUCTION. DIMENSIONS NOT WARRANTED.
THIS DRAWING TO REMAIN PROPERTY OF JULES CHAMBERLAIN



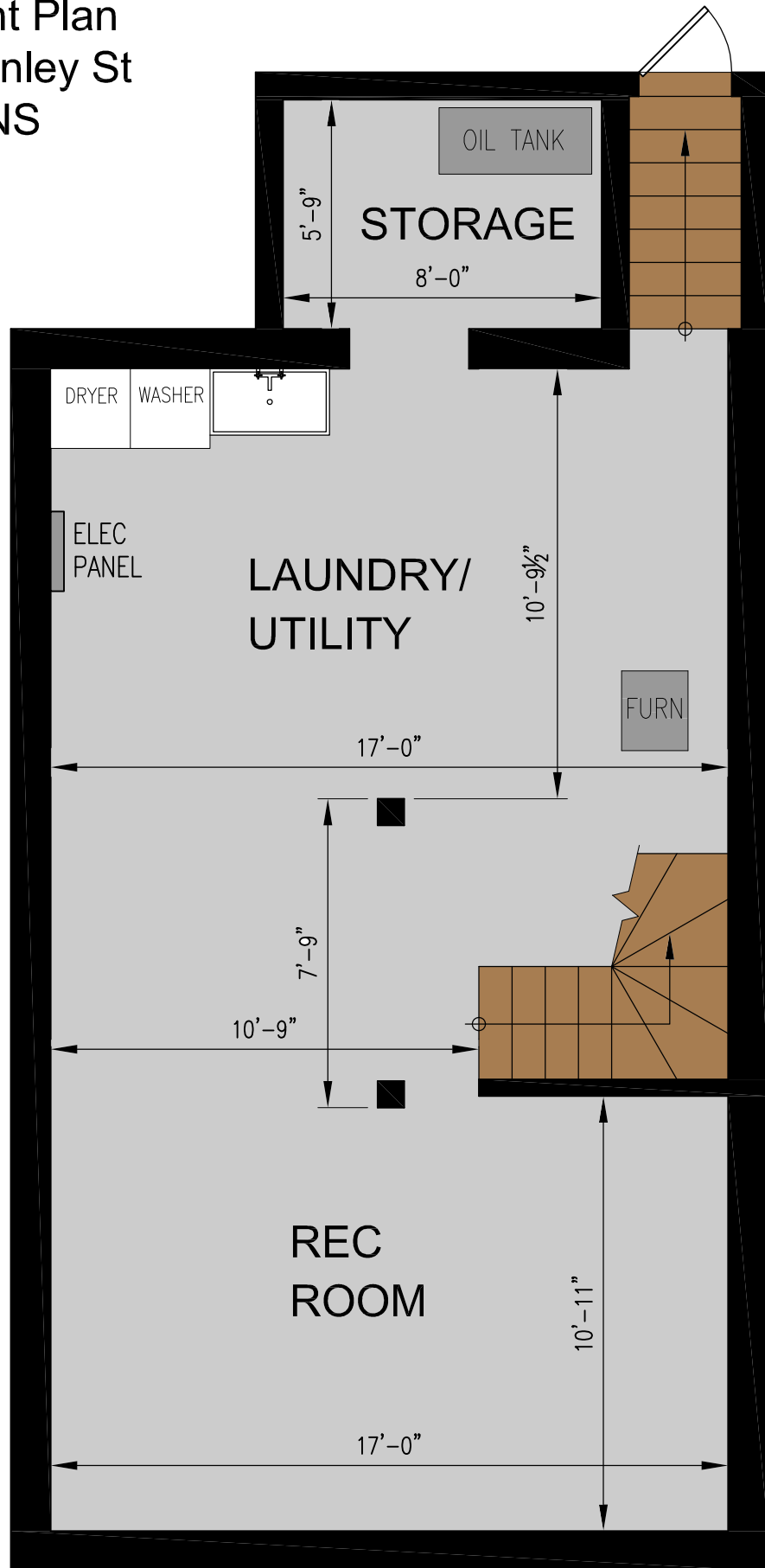
UPPER FLOOR AREA - 644 sqft



Upper Floor Plan
5534 Stanley St
Halifax, NS



Basement Plan
5534 Stanley St
Halifax, NS



BASEMENT AREA - 675 sqft

THIS DRAWING IS FOR REFERENCE ONLY, NOT FOR CONSTRUCTION. DIMENSIONS NOT WARRANTED. THIS DRAWING TO REMAIN PROPERTY OF JULES CHAMBERLAIN