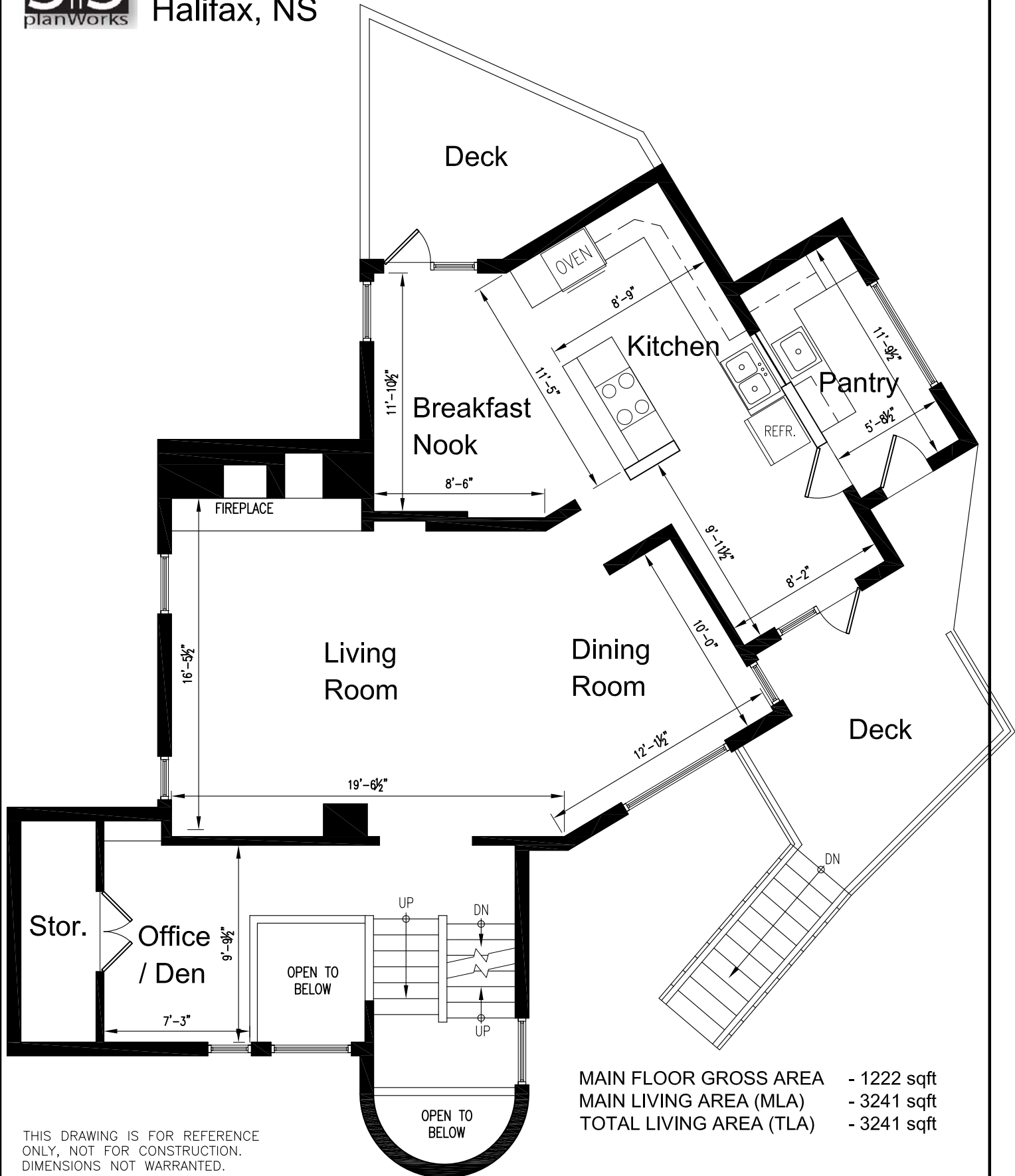




Main Floor Plan
35 Albion Rd
Halifax, NS

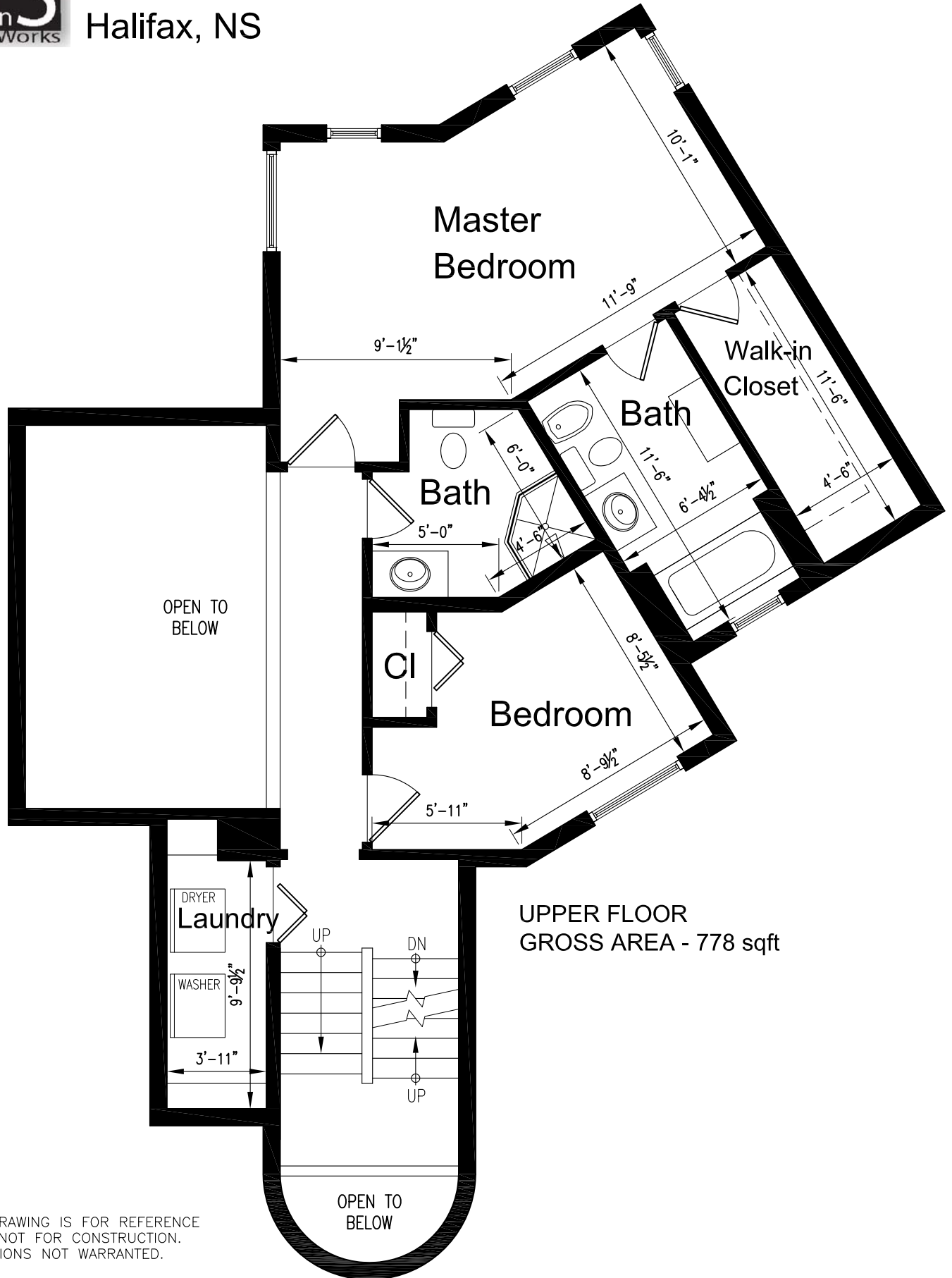


MAIN FLOOR GROSS AREA - 1222 sqft
MAIN LIVING AREA (MLA) - 3241 sqft
TOTAL LIVING AREA (TLA) - 3241 sqft

THIS DRAWING IS FOR REFERENCE ONLY, NOT FOR CONSTRUCTION. DIMENSIONS NOT WARRANTED.



Upper Floor Plan
35 Albion Rd
Halifax, NS

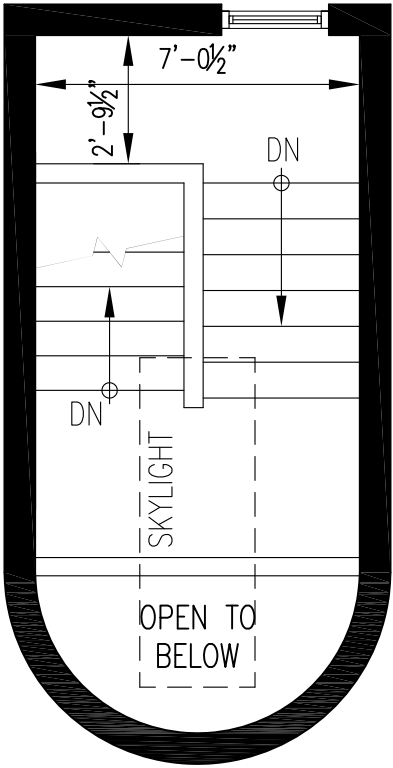


THIS DRAWING IS FOR REFERENCE ONLY, NOT FOR CONSTRUCTION. DIMENSIONS NOT WARRANTED.



Attic Floor Plan
35 Albion Rd
Halifax, NS

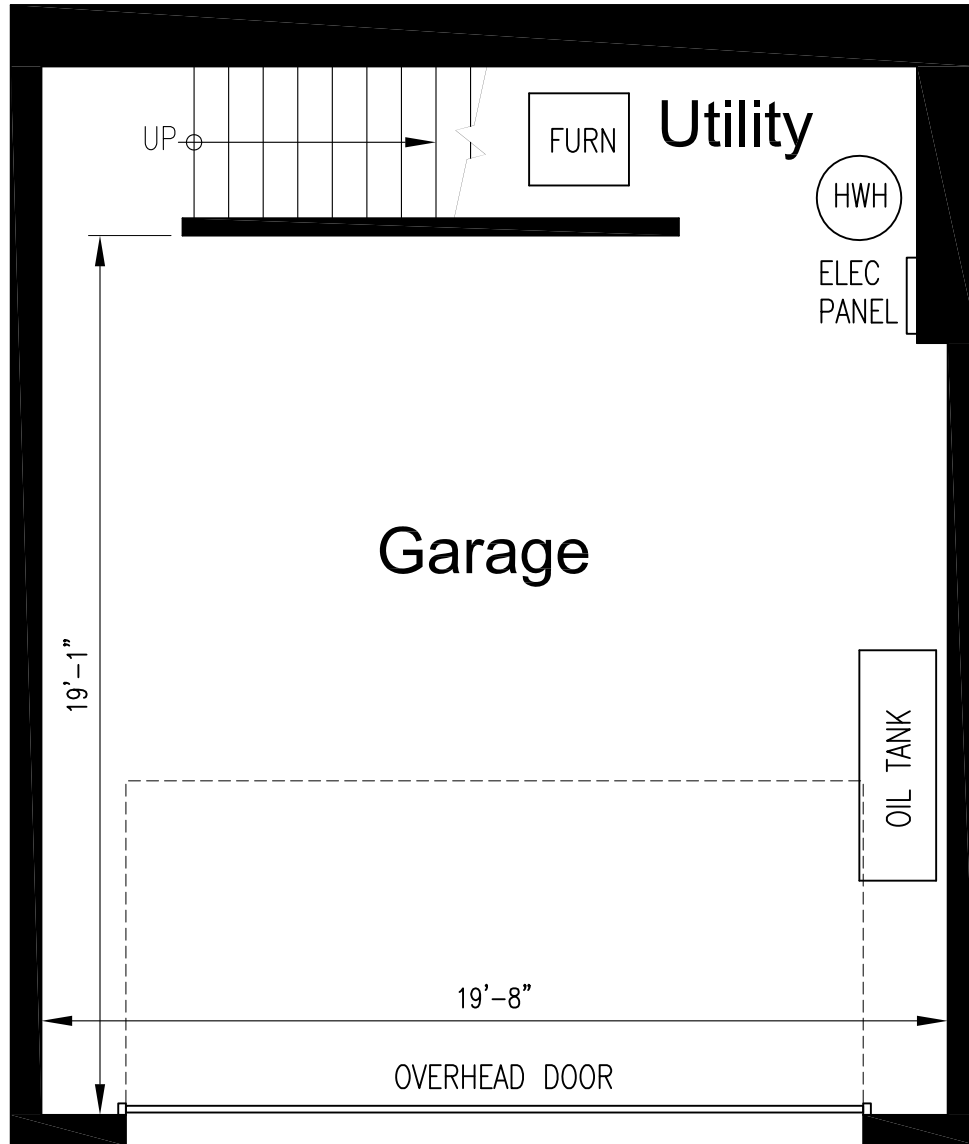
ATTIC FLOOR
GROSS AREA - 104 sqft



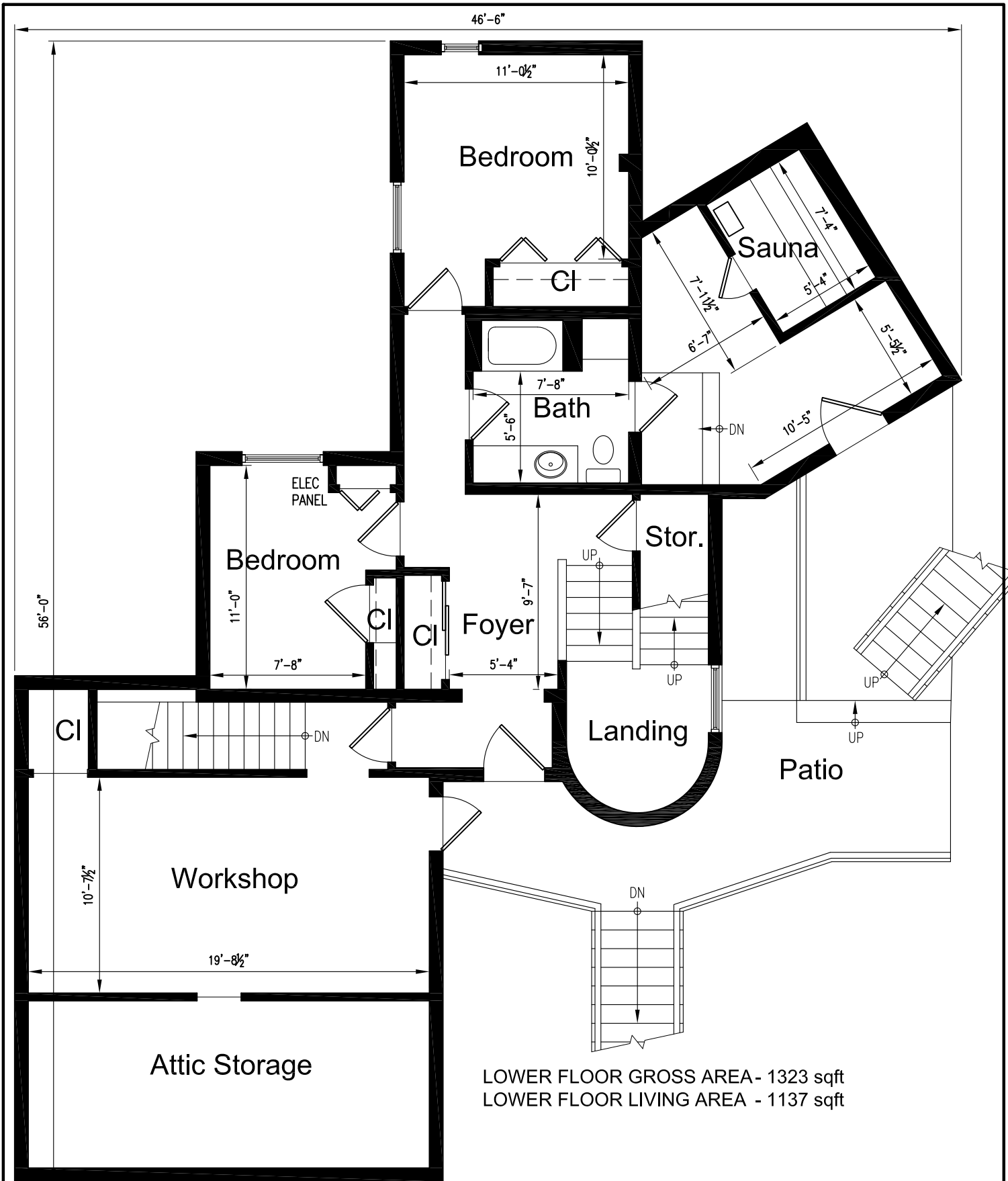
THIS DRAWING IS FOR REFERENCE
ONLY, NOT FOR CONSTRUCTION.
DIMENSIONS NOT WARRANTED.

THIS DRAWING IS FOR REFERENCE ONLY, NOT FOR CONSTRUCTION. DIMENSIONS NOT WARRANTED.

GARAGE FLOOR GROSS AREA - 520 sqft



Garage Floor Plan
35 Albion Rd
Halifax, NS



LOWER FLOOR GROSS AREA - 1323 sqft
 LOWER FLOOR LIVING AREA - 1137 sqft



Lower Floor Plan
 35 Albion Rd
 Halifax, NS

THIS DRAWING IS FOR REFERENCE ONLY, NOT FOR CONSTRUCTION. DIMENSIONS NOT WARRANTED.